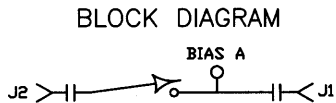
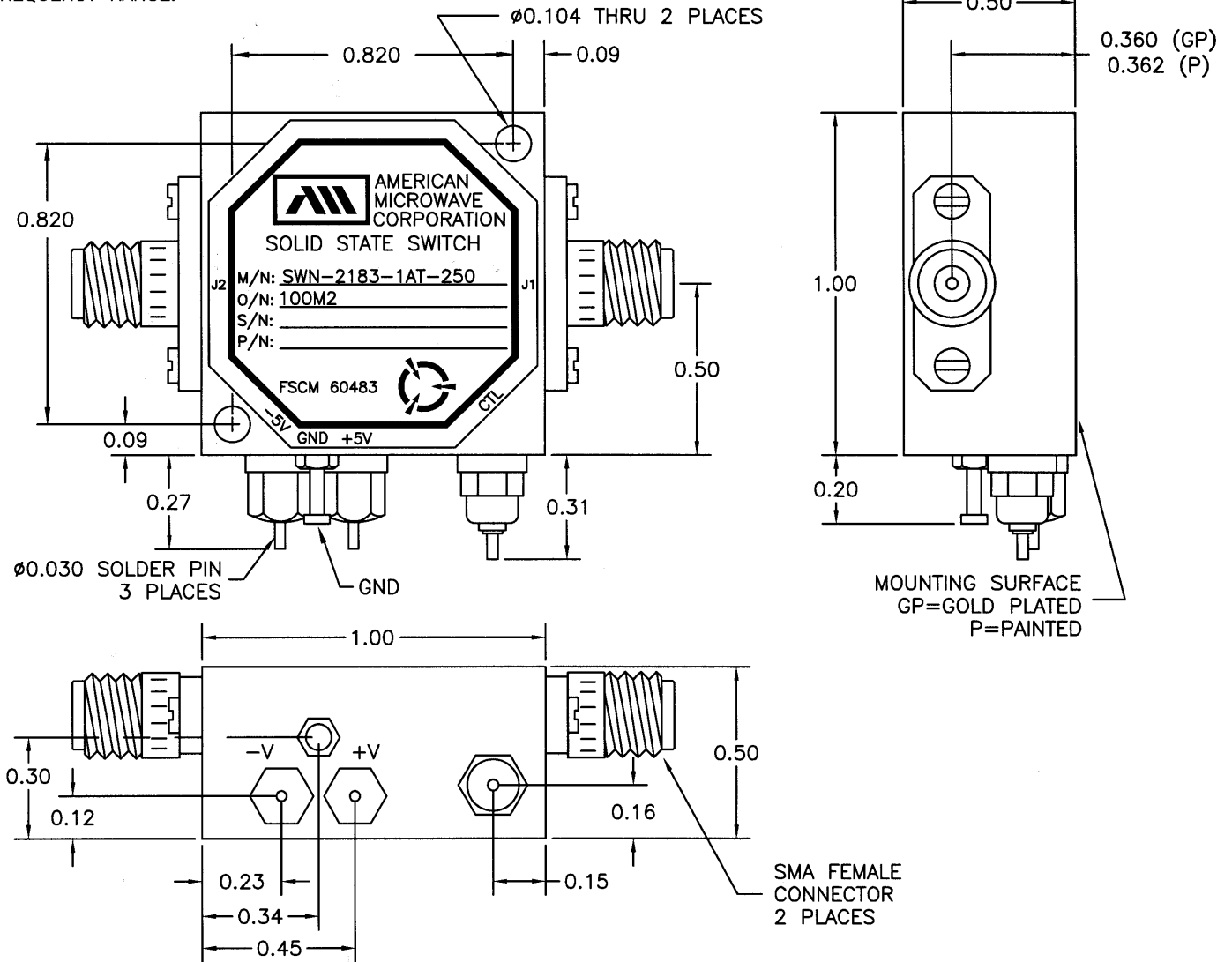


ZONE		REV.	DESCRIPTION	DATE	APPROVED
-			ORIGINAL RELEASE, JOB# 402018-6	02/26/04	

DESCRIPTION:

AMC MODEL NUMBER SWN-2183-1AT-250 OPTION 100M2, A18 IS A SINGLE POLE SINGLE THROW TERMINATED SWITCH MODULE WITH LOW INSERTION LOSS, VERY HIGH ISOLATION, DESIGNED FOR 0.1 GHz TO 2 GHz FREQUENCY RANGE.

MECHANICAL OUTLINE



ALL DIMENSIONS ARE IN INCHES
TOLERANCES:
X.XX ±0.020
X.XXX ±0.010

APPROVALS		DATE	AMERICAN MICROWAVE CORPORATION FREDERICK, MARYLAND		
DRAWN	WJL	02/26/04	TITLE OUTLINE DRAWING SWN-2183-1AT-250 OPTIONS 100M2 0.1 TO 2 GHz, SINGLE POLE SINGLE THROW SWITCH		
REDRAWN	JDJ	8/25/04	SIZE	FSCM NO.	DWG NO.
ISSUED			A	60483	100-6929
			SCALE	N/S	SHEET 2 of 3

DESCRIPTION:

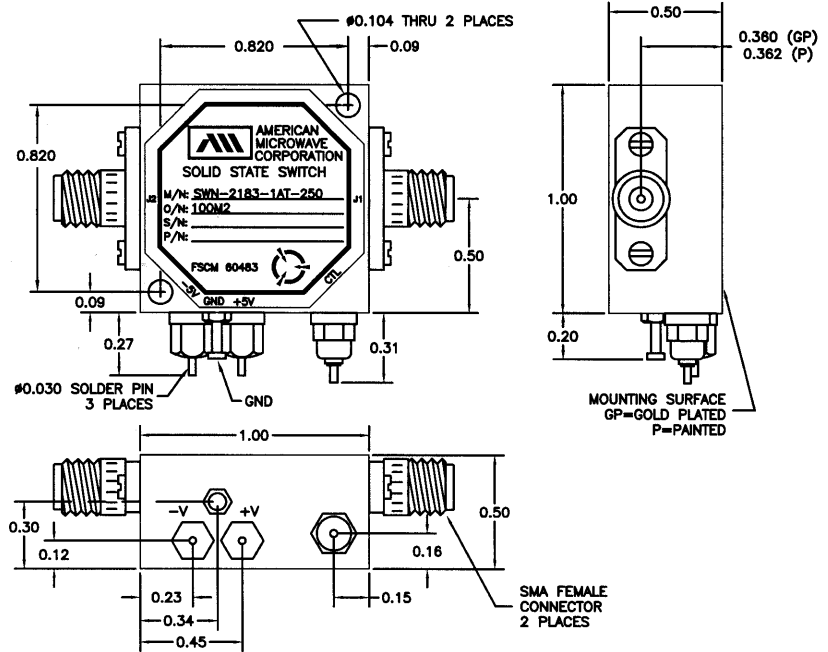
AMC MODEL NUMBER SWN-2183-1AT-250 OPTION 100M2 IS A SINGLE POLE SINGLE THROW TERMINATED SWITCH MODULE WITH LOW INSERTION LOSS, VERY HIGH ISOLATION, DESIGNED FOR 0.1 GHz TO 2 GHz FREQUENCY RANGE.

ZONE		REV.	DESCRIPTION	DATE	APPROVED
			- ORIGINAL RELEASE, JOB# 402018-6	02/26/04	

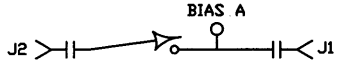
MECHANICAL OUTLINE

SPECIFICATIONS:

- FREQUENCY: 0.1 GHz TO 2 GHz
- INSERTION LOSS: 2.0 dB MAXIMUM
- ISOLATION: 80 dB MINIMUM
- VSWR: 2.0:1
- SPEED: DELAY ON: 1 μ SEC MAXIMUM (50% TTL TO 90% RF)
 DELAY OFF: 1 μ SEC MAXIMUM (50% TTL TO 10 % RF)
- DC POWER SUPPLY: +5VDC @ 100 mA MAXIMUM
 -15VDC @ 75 mA MAXIMUM
- CONTROL: TTL LOGIC "0"=ON "1"=OFF
- WEIGHT: 1.5 OUNCES TYPICAL
- RF POWER INPUT: +10 dBm CW MAXIMUM @ 0.1 GHz TO 1.65 GHz
- RF CONNECTORS: SMA FEMALE
- SIZE: 1.00" (L) x 1.00" (W) x 0.50" (H)
- WEIGHT: 1.5 OUNCE TYPICAL



BLOCK DIAGRAM



ENVIRONMENTAL RATINGS

- TEMPERATURE: -0°C TO +50°C (OPERATING)
 -65°C TO +125°C (STORAGE)
- HUMIDITY: MIL-STD-202F, METHOD 103B COND. B
- SHOCK: MIL-STD-202F, METHOD 213B COND. B
- VIBRATION: MIL-STD-202F, METHOD 204D COND. B
- ALTITUDE: MIL-STD-202F, METHOD 105C COND. B
- TEMPERATURE CYCLE: MIL-STD-202F, METHOD 107D COND. A

ALL DIMENSIONS ARE IN INCHES
 TOLERANCES:
 X.XX \pm 0.020
 X.XXX \pm 0.010

NOTE: SPECIFICATIONS WILL VARY OVER OPERATING TEMPERATURE
 NOTE: THE ABOVE SPECIFICATIONS ARE SUBJECT TO CHANGE OR REVISION

APPROVALS		DATE	AMERICAN MICROWAVE CORPORATION FREDERICK, MARYLAND		
DRAWN	<i>878</i>	02/26/04	TITLE PRODUCT FEATURE SWN-2183-1AT-250 OPTIONS 100M2 0.1 TO 2 GHz, SINGLE POLE SINGLE THROW SWITCH		
REDRAWN	<i>929</i>	8/25/04	SIZE	FSCM NO.	DWG NO.
ISSUED			A	60483	100-6929
			SCALE	N/S	SHEET 1 of 3